

DISPOSAL

Dispose of the packaging and the device shall always be in accordance with national and local laws and regulations. Never put the vaping device on fire. The built-in lithium-ion battery may burst or explode.

POSSIBLE SIDE EFFECTS

Nicotine is an addictive substance. If you inhale too much nicotine or use the product too much, you may experience one or more of the following effects:

- Feeling faint
- Nausea
- Headache
- Coughing
- Irritation in the mouth or throat
- Dizziness
- Stomach discomfort
- Hiccups
- Nasal congestion
- Vomiting (being sick)
- Chest palpitations
- Abnormal heart rate

If you experience any of the side effects listed or not listed in this leaflet, discontinue using this product. If the effect(s) continue after you stop use, consult your doctor or healthcare professional and bring this leaflet to their attention.

There are no reported medical side effects with this product. If you believe you are experiencing/have experienced a side effect, please contact the manufacturer.



Scan for Video
Instruction

MANUFACTURER:

Dongguan Xingyan Technology Co., Ltd

ADDRESS:

Room 201, building 1, 36 Ruifeng Street,
Dalingshan Dongguan City, Guangdong
Province

E-mail: support@firerose-tech.com



FIREROSE



User Manual

SPECIFICATIONS

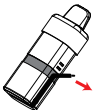
Dimension (with Pod): 114.7*22*26mm
Coil: Mesh Coil
Pod Capacity: 2ml
Refill Container Capacity: 5ml
Nicotine Strength: 20mg/ml
Battery Capacity: 600mAh
Charging: Type-C

READ ALL OF THIS INFORMATION LEAFLET CAREFULLY BEFORE YOU START USING THIS PRODUCT

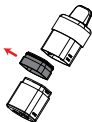
This product is intended only for adult smokers. This product is not recommended for non-smokers, young people (under the age of 18), pregnant or breast-feeding women, and those experiencing general ill health.

INSTRUCTIONS

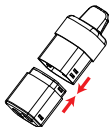
a. Take the product out of the package, and remove the sticker on the bottom of the container.



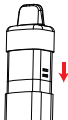
b. Remove the silicone shim between the pod and the container.



c. Install the pod to the container, and make sure they are firmly and properly connected to avoid leakage.



d. Insert the combined pod into the device.



2. Vaping

Draw to vape.



3. Protection Function

- Over-Time Protection: The white light will flash twice when the vaping time is over 10 seconds, and the device will stop output.

- Low Voltage Protection: The white light will flash 10 times when the device voltage is too low, and the device will stop output.
- Short Circuit: The white light will light up for 2 seconds when a short circuit occurs.

4. Charging

Charge the device with a Type-C charging cable.

The light will stay on during the charging process and go out when the charging is done. When disconnected to the power supply, the light will flash 3 times.

WARNING

- Always keep the device away from children.
- Don't open the vaping device, and don't attempt to repair the device yourself. Disassembling the device may damage it or cause injury to you.
- Do not cover the device with items such as newspapers, tablecloths, or curtains, and do not use this device on soft support such as bedding, blankets, etc. It may cause burns and other injuries if the battery leaks or overheats during the night.
- Do not use your device near sinks or other wet locations.
- Do not expose this device to rain or moisture.
- Do not expose your device to extreme heat or cold. This may result in a risk of battery damage, other injury, or property damage.
- Keep out of direct sunlight.
- Store in a temperature between 2°C-25°C.
- Do not use the vaping device near flammable liquids or gases.