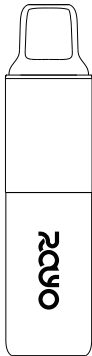


FIREROSE RCYO



User Manual



SPECIFICATIONS

Dimensions: $\Phi 22 \times 91.5 \text{mm}$

Coil: Ceramic Coil

Pod Capacity: 2ml

Nicotine Strength: 20mg/ml

Battery Capacity: 800mAh

Charging: Type-C



Scan for Video
Instruction

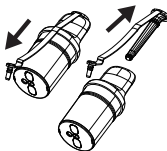
**READ ALL OF THIS
INFORMATION LEAFLET
CAREFULLY BEFORE YOU
START USING THIS
PRODUCT**

This product is intended only for adult smokers. This product is not recommended for non-smokers, young people (under the age of 18), pregnant or breast-feeding women, and those experiencing general ill health.

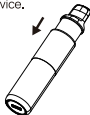
INSTRUCTIONS

1. How to use

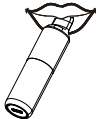
A Remove the silicone plug from the mouthpiece and the bottom of the pod.



B Insert the pod into the device.



C Draw to vape.



2. Vaping Light Mode Adjusting

Draw 3 times within 2 seconds to change light modes.

Mode 1: When the battery level is above 10%, the light will show white dynamic effect; when the battery level is below 10%, the light will show a red dynamic effect. When stop vaping, the lights will run 8 cycles and remain on for 3 seconds.

Mode 2: When the battery level is above 10%, all lights will flash in white, and when the battery level is below 10%, all lights will flash in red. When stop vaping, all lights will flash 5 times.

Mode 3: No light during vaping.

3. Protection Function

Over-Time Protection: All lights will flash twice in red when the vaping time is over 10 seconds, and the device will stop output.

Low Voltage Protection: All lights will flash 10 times in red when the device voltage is too low.

Short Circuit: All lights will flash 5 times in red when a short circuit occurs.

Open Circuit: All lights will flash 7 times in red when a open circuit occurs.

4. Charging

A Charge the device with a Type-C charging cable. All the lights will turn white and stay on for 1 second before entering the charging mode. The illuminated light represents the battery level.

B All the lights will remain on for 5 seconds and then turn off when the battery is fully charged. When disconnected from the power supply, the lights will turn white and stay on for 1 second before gradually going out.

C Users can vape during the charging process.

WARNING

- Always keep the device away from children.
- Don't open the vaping device, and don't attempt to repair the device yourself. Disassembling the device may damage it or cause injury to you.
- Do not cover the device with items such as newspapers, tablecloths, or curtains, and do not use this device on soft support such as bedding, blankets, etc. It may cause burns and other injuries if the battery leaks or overheats during the night.
- Do not use your device near sinks or other wet locations.
- Do not expose this device to rain or moisture.
- Do not expose your device to extreme heat or cold. This may result in a risk of battery damage, other injury, or property damage.
- Keep out of direct sunlight.
- Store in a temperature between 2°C-25°C.
- Do not use the vaping device near flammable liquids or gases.

DISPOSAL

Dispose of the packaging and the device shall always be in accordance with national and local laws and regulations. Never put the vaping device on fire. The built-in lithium-ion battery may burst or explode.

POSSIBLE SIDE EFFECTS

Nicotine is an addictive substance. If you inhale too much nicotine or use the product too much, you may experience one or more of the following effects:

- Feeling faint
- Nausea
- Headache
- Coughing
- Irritation in the mouth or throat
- Dizziness
- Stomach discomfort
- Hiccups
- Nasal congestion
- Vomiting (being sick)
- Chest palpitations
- Abnormal heart rate

If you experience any of the side effects listed or not listed in this leaflet, discontinue using this

product. If the effect(s) continue after you stop use, consult your doctor or healthcare professional and bring this leaflet to their attention. There are no reported medical side effects with this product. If you believe you are experiencing/have experienced a side effect, please contact the manufacturer.



www.firerosetech.com

